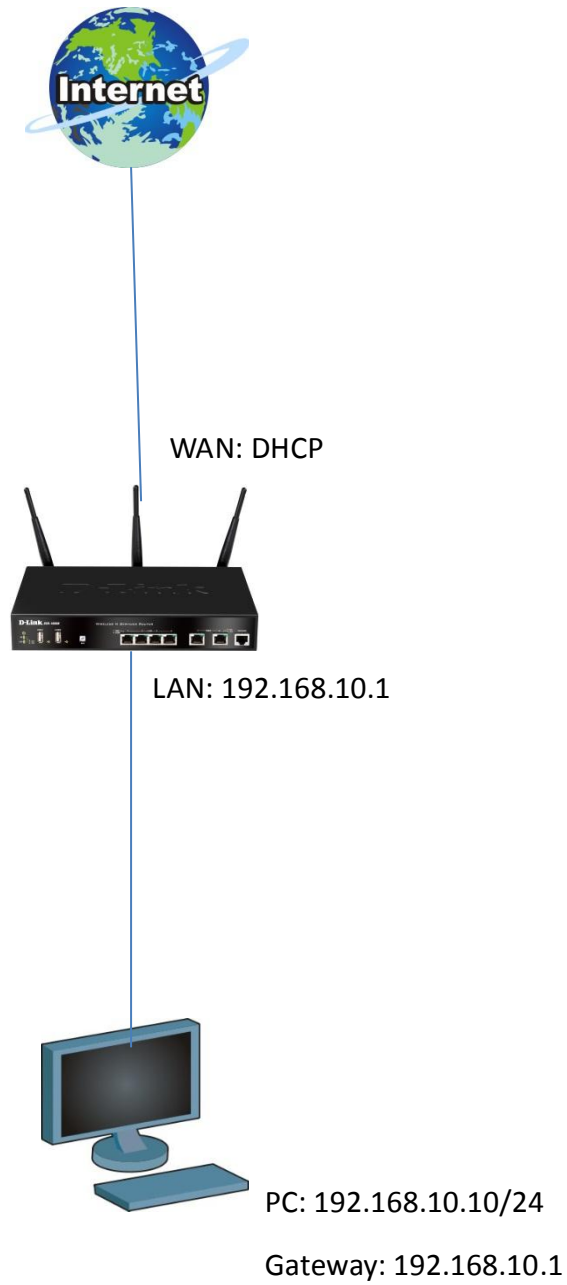


How to setup Captive Portal on the DSR

Topology:



This reference file will teach you how to setup Captive Portal function on the DSR firmware version 1.03B74.

(1) Check your LAN network is the same with your PC.

The screenshot displays the D-Link web management interface for a DSR-1000N router. The top navigation bar includes 'DSR-1000N', 'SETUP', 'ADVANCED', 'TOOLS', 'STATUS', and 'HELP'. The left sidebar lists various configuration categories such as Wizard, Internet Settings, Wireless Settings, Network Settings, DMZ Setup, VPN Settings, USB Settings, and VLAN Settings. The main content area is titled 'LAN SETUP' and contains the following sections:

- LAN TCP/IP Setup:** IP Address (192.168.10.1), Subnet Mask (255.255.255.0).
- DHCP:** DHCP Mode (DHCP Server), Starting IP Address (192.168.10.100), Ending IP Address (192.168.10.254), Primary DNS Server, Secondary DNS Server, Domain Name (DLink), WINS Server, Lease Time (24), Relay Gateway.
- DNS Host Name Mapping:** A table with 8 rows for mapping host names to IP addresses.
- LAN Proxy:** Enable DNS Proxy (checked).

At the bottom of the interface, it reads 'UNIFIED SERVICES ROUTER' and 'Copyright © 2011 D-Link Corporation.' A 'Helpful Hints...' section on the right provides additional information about the LAN configuration page.

(2) Go to advanced > captive portal. Enable LAN interface.

Product Page: DSR-1000N Hardware Version: A1 Firmware Version: 1.03B74_WW

D-Link

DSR-1000N // SETUP ADVANCED TOOLS STATUS HELP

Application Rules Website Filter Firewall Settings Wireless Settings Advanced Network Routing Certificates Users IP/MAC Binding IPv6 Radius Settings Captive Portal Switch Settings Intel® AMT

CAPTIVE PORTAL SETUP LOGOUT

Captive Portal is a security mechanism to selectively provide authentication on certain interfaces. You can use this page to manage the interfaces. The List of Available Interfaces includes LAN and all VLANs.

Save Settings Don't Save Settings

Available Interfaces

LAN:

List of Available Profiles

	Profile Name	Status	Action
<input checked="" type="radio"/>	default	In Use	Show Preview
<input type="radio"/>	default2	Not In Use	Show Preview

Enable Edit Delete Add

UNIFIED SERVICES ROUTER

Helpful Hints...
Enabling Captive Portal will result in the addition of firewall policies. This will help you to authenticate users trying to access internet. By default, Captive Portal is not enabled on any of the interfaces.
More...

(3) Go to advanced > users. Add new user, you need to key in username, password and choose RunTimeAuth user.

Product Page: DSR-1000N Hardware Version: A1 Firmware Version: 1.03B74_WW

D-Link

DSR-1000N // SETUP ADVANCED TOOLS STATUS HELP

Application Rules Website Filter Firewall Settings Wireless Settings Advanced Network Routing Certificates Users IP/MAC Binding IPv6 Radius Settings Captive Portal Switch Settings Intel® AMT

USERS LOGOUT

This page shows a list of available users in the system. A user can add, delete and edit the users also. This page can also be used for setting policies on users.

List of Users

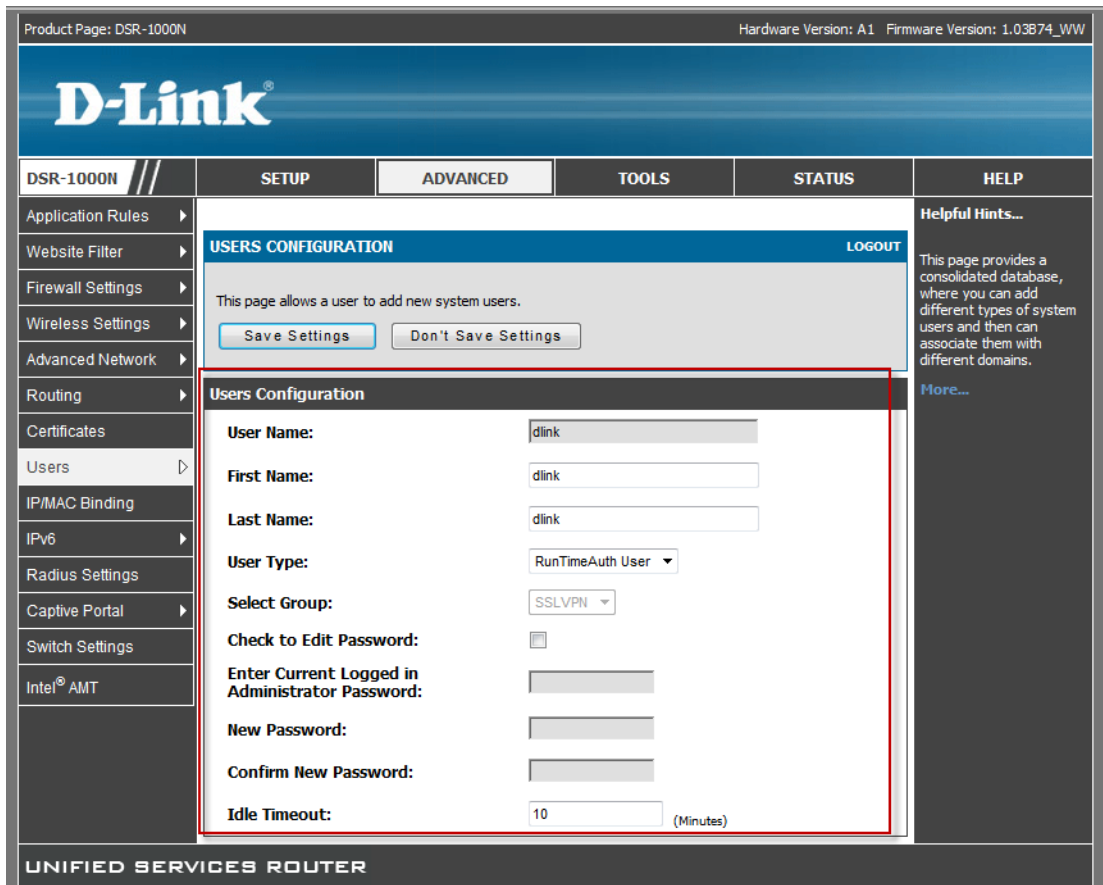
<input type="checkbox"/>	User Name	Group	Type	Authentication Domain	Login Status
<input type="checkbox"/>	admin *	SSLVPN	Administrator	Local User Database	Enabled (LAN and WAN)
<input type="checkbox"/>	guest *	SSLVPN	Guest	Local User Database	Disabled
<input checked="" type="checkbox"/>	dlink	SSLVPN	RunTimeAuth User	Local User Database	Enabled (LAN and WAN)

Edit Delete Add

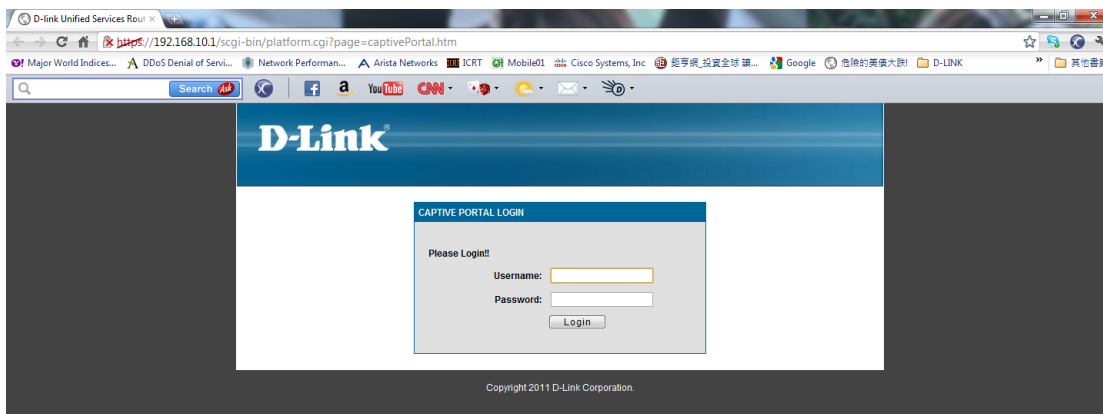
Login Policies Policies By Browsers Policies By IP

UNIFIED SERVICES ROUTER

Helpful Hints...
Authentication of the users (IPsec, SSL VPN, or GUI) is done by the router using either a local database on the router or external authentication servers (i.e. LDAP or RADIUS). User level policies can be specified by browser, IP address of the host, and whether the user can login to the router's GUI in addition to the SSL VPN portal.
More...



(4) Open your browser then you should login your username and password.



END